

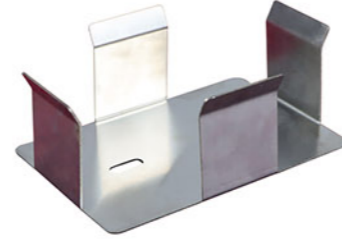
Optional shaker accessories



Flask Clamp



Tube Rack



Microplate/96-well plate



Universal attachment with 3 bars



Universal spring plate

Technical Parameters:

No.	Material code	Name	No.	Specifications	Note
1	18.01.09.00001	Flask Clamp	BS-A10	50ml	Common Type
2	18.01.09.00002		BS-A11	100ml	
3	18.01.09.00003		BS-A12	150ml	
4	18.01.09.00004		BS-A13	200ml	
5	18.01.09.00005		BS-A14	250ml	
6	18.01.09.00006		BS-A15	500ml	
7	18.01.09.00007		BS-A16	1000ml	
8	18.01.09.00008		BS-A17	2000ml	
9	18.01.09.00009		BS-A18	3000ml	
10	18.01.09.00010		BS-A19	5000ml	
11	18.01.09.00011	Tube Rack	BS-A20	54*10ml	Optional: Common Type
12	18.01.09.00012		BS-A21	54*15ml	
13	18.01.09.00013		BS-A22	28*50ml	
14	18.01.09.00014		BS-A23	24*100ml	
15	18.01.09.00015		BS-A24	54-well, suitable forΦ15*150centrifuge tubes.	

No.	Material code	Name	No.	Specifications	Note
16	18.01.09.00016	Tube Rack	BS-A25	54-well, suitable forΦ18*180 centrifuge tubes.	Optional: Common Type
17	18.01.09.00017		BS-A26	54-well, suitable forΦ20*200 centrifuge tubes.	
18	18.01.09.00018		BS-A27	32-well, suitable forΦ25mm*200mm centrifuge tubes.	
19	18.01.09.00019		BS-A28	28-well, suitable forΦ30mm*200mm centrifuge tubes.	
20	18.01.09.00020		BS-A50	54*7ml	
21	18.01.09.00021		BS-A51	54*10ml	
22	18.01.09.00022		BS-A52	54*20ml	
23	18.01.09.00023		BS-A53	54*30ml	
24	18.01.09.00024		Microplate/96-well plate	BS-A30	
25	18.01.09.00025	Universal attachment with 3 bars	BS-A40	320*300*70mm	suitable for 2000ml or larger beakers.
26	23.02.09999	Horizontal thermostatic shaker spring plate	SW20	900*470mm	suitable for BJPX-SW10 BJPX-SW10-L BJPX-SW20 BJPX-SW20-L
27	23.02.10000	Universal Spring plate	SDT10	420*400mm	suitable for BJPX-SDT10 BJPX-SDT20 BJPX-SDL10 BJPX-SDL20
28	23.02.10002	Universal spring plate	SDL20	460x450mm (One layer spring plate, two layer flask clamp)	suitable for BJPX-SDL10 BJPX-SDL20 BJPX-SDT10 BJPX-SDT20
29	23.02.10003	Universal spring plate	SDW10	720*490mm	suitable for BJPX-SDW10 BJPX-SDW10-L BJPX-SDW20 BJPX-SDW20-L
30	23.02.09013	Universal Spring plate	ST10	562*343mm	suitable for BJPX-ST10 BJPX-ST11 BJPX-ST20
31	23.02.09014		ST10-L	202*202mm	suitable for BJPX-ST10-L BJPX-ST11-L
32	23.02.09016	Universal Spring plate	SL20-L	446*393mm(Upper and lower spring plate)	suitable for BJPX-SL20-L BJPX-SL20
33	23.02.10004	Double-Layer flask plate	SL20-L2	446*393mm(Upper and lower Flask Clamp)	suitable for BJPX-SL20-L BJPX-SL20
34	23.02.09017	Universal Spring plate	SZ10	682*502mm	suitable for BJPX-SZ10 BJPX-SZ11